



# SOUL ESTATES

## SALES & LETTINGS

### TO LET - 3 BEDROOM HOUSE

**Worlds End Lane, Quinton, B32 1JB**

**£1,400 PCM**

Soul Estates are proud to present this well-presented 3-bedroom semi-detached house To Let. This perfect family home is situated in a very popular area of Quinton. Situated within walking distance to local amenities and good schools, easy links to the QE hospital in Harborne and the University of Birmingham as well as Birmingham City Centre and motorway links to the M5.

The property offers an entrance porchway leading into the hallway with rooms going off to the 2 spacious reception rooms, a family kitchen with separate utility and a downstairs WC. Kitchen with a range of wall and base units to match, splashback tiling, gas hob with an electric oven.

Stairs leading to the first-floor landing which leads off to, three bedrooms and a family bathroom with separate shower. The property also benefits gas central heating and double glazing, low maintenance front and rear garden with off-road parking and garage.

✓ **3 BEDROOM SEMI-DETACHED HOUSE**

✓ **TWO SPACIOUS RECEPTION ROOMS**

✓ **BATHROOM WITH SEPARATE SHOWER**

✓ **DOWNSTAIRS WC & UTILITY AREA**















# SOUL ESTATES

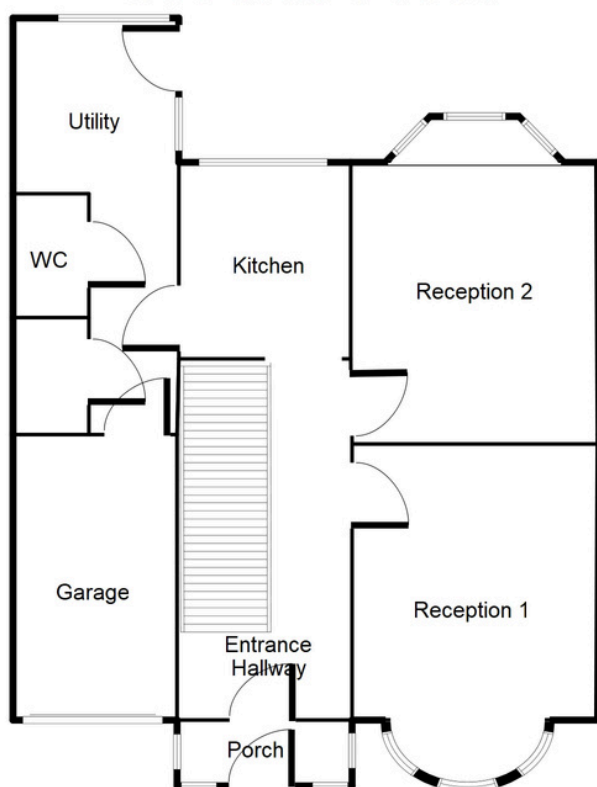
## SALES & LETTINGS

### TO LET - 3 BEDROOM HOUSE

Worlds End Lane, Quinton, B32 1JB

£1,400 PCM

#### Ground Floor



This floorplan is just an example, this is not to scale.  
Please see description for exact room sizes.  
(c) Soul Estates

#### Entrance Hallway:

16' 1" x 5' 7" (4.90m x 1.70m)

#### Reception Room 1:

11' 6" 4" x 11' 1" (35.43m x 3.38m)

#### Reception Room 2:

15' 5" x 10' 3" (4.70m x 3.12m)

#### Kitchen:

8' 10" x 6' 4" (2.69m x 1.93m)

#### Utility Room:

20' 5" x 7' 0" (6.22m x 2.13m)

#### WC:

4' 8" x 2' 3" (1.42m x 0.69m)



# SOUL ESTATES

## SALES & LETTINGS

### CONTACT US

Soul Estates  
20 Great Bridge  
Tipton  
DY4 7HA

0121 647 6779

[www.soulestates.co.uk](http://www.soulestates.co.uk)

WWW.SOULESTATES.CO.UK | 0121 647 6779



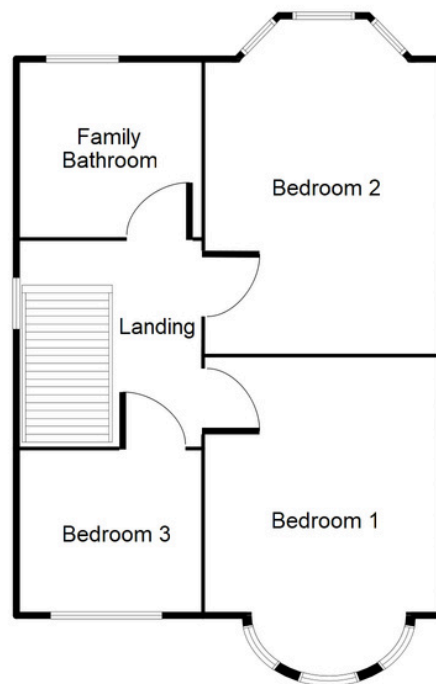
**SOUL ESTATES**  
**SALES & LETTINGS**

## TO LET - 3 BEDROOM HOUSE

**Worlds End Lane, Quinton, B32 1JB**

**£1,400 PCM**

### First Floor



**Bedroom 1:**

15' 8" x 9' 3" (4.77m x 2.82m)

**Bedroom 2:**

15' 4" x 10' 4" (4.67m x 3.15m)

**Bedroom 3:**

8' 3" x 6' 5" (2.51m x 1.95m)

**Bathroom:**

8' 9" x 6' 3" (2.66m x 1.90m)

This floorplan is just an example, this is not to scale.  
Please see description for exact room sizes.  
(c) Soul Estates



**SOUL ESTATES**  
**SALES & LETTINGS**

### CONTACT US

Soul Estates  
20 Great Bridge  
Tipton  
DY4 7HA

0121 647 6779

[www.soulestates.co.uk](http://www.soulestates.co.uk)

[WWW.SOULESTATES.CO.UK](http://WWW.SOULESTATES.CO.UK) | 0121 647 6779